

Gear Pump Units

1-1202-US

For single-line centralized lubrication systems



MFE5-KW3-2



MFE5-BW3-2



MFE5-KW6



MFE5-BW7

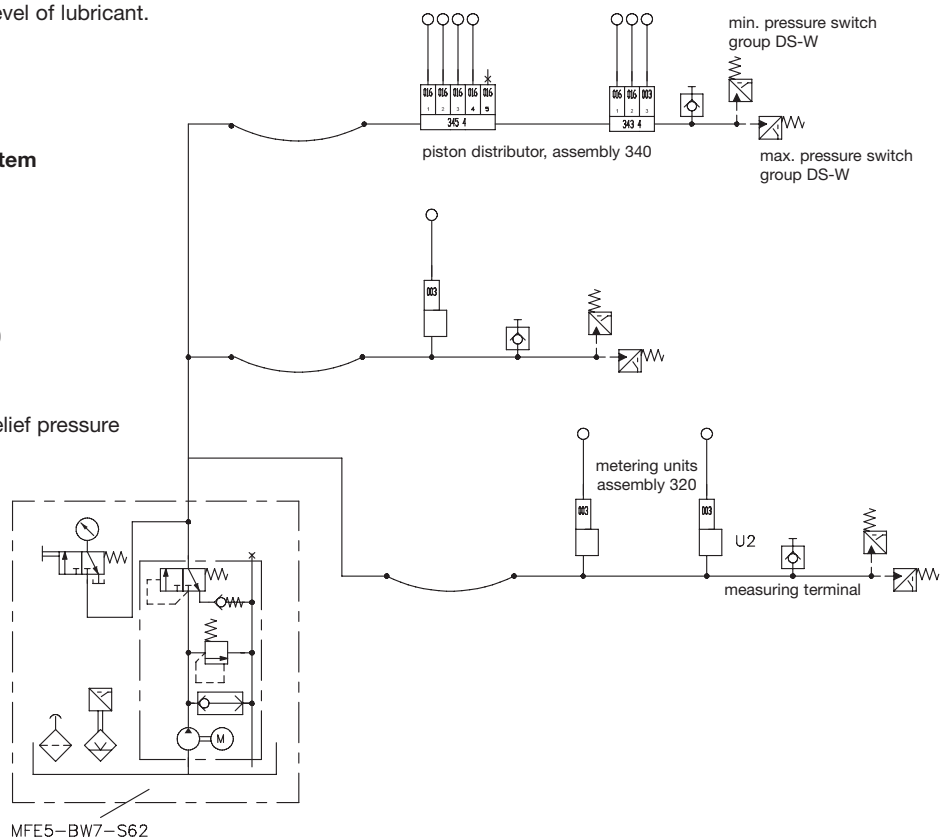
These units comprising the **MFE** Group are designed to supply the lubricant used in intermittently operated, single-line centralized lubrication systems. The basic setup includes a gear pump unit with motor, a 3- or 6-liter lubricant reservoir – optionally of metal or plastic – or a 15-liter metal reservoir and float switch to monitor the minimum permissible level of lubricant.

In addition to the basic models it is also possible for the units to be outfitted with add-ons. Special models for a wide variety of applications are listed in the overview table on page 8.

Example of a single-line central lubrication system for automobile makers

The system consists essentially of:

- a gear pump unit
- 6-liter metal reservoir
- piston distributors, assembly 340
- metering units, assembly 320
- pressure switches, group DS-W for max. pressure build-up and relief pressure



Model ME5 Gear pump unit mounted separate from oil reservoir

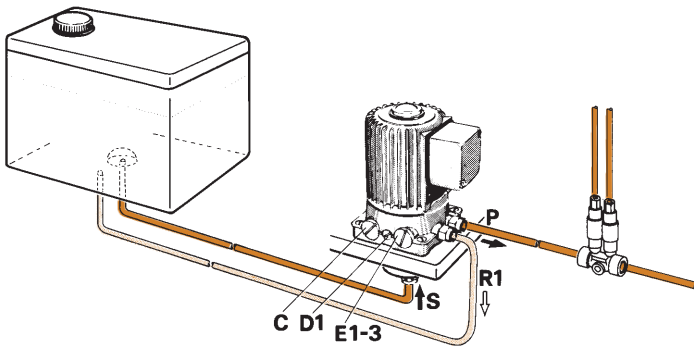


Fig. 1

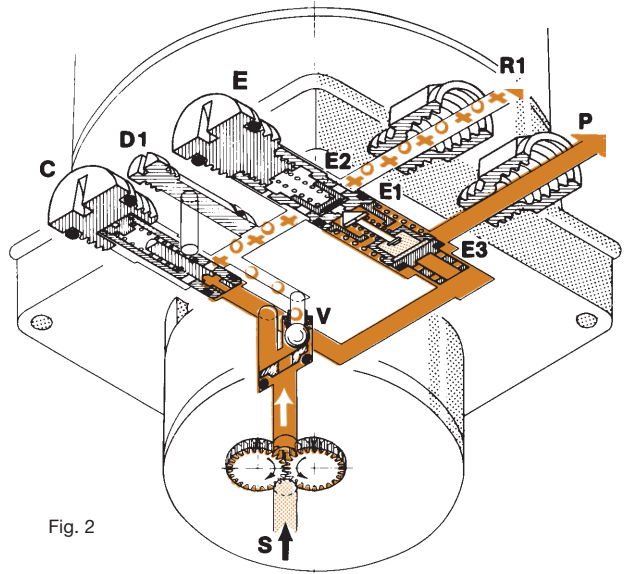


Fig. 2

Model MFE5 Gear pump unit for flange-mounting on oil reservoir

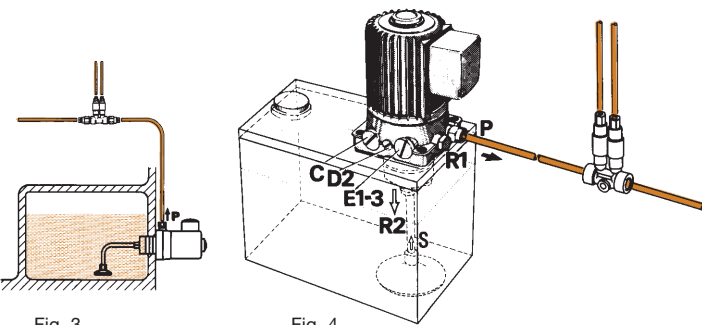


Fig. 3

Fig. 4

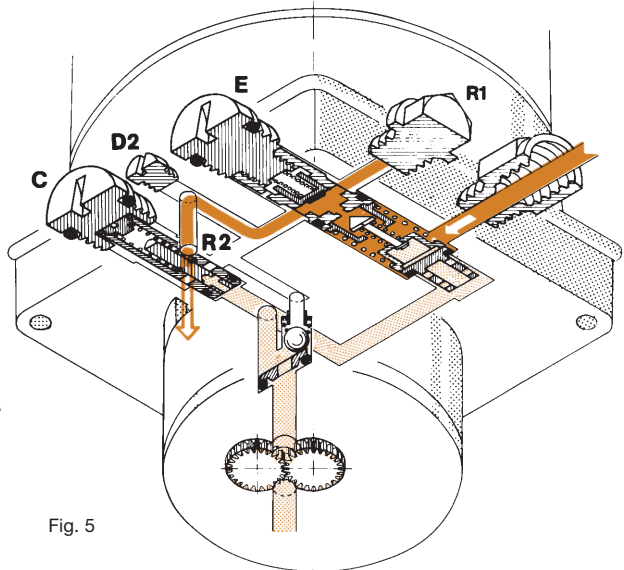
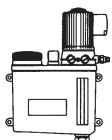


Fig. 5

Regarding Fig. 3:

A special sealed pump must be used for horizontal flange-mounting of the unit in a position **below the oil level**.



Gear pump unit model **MFE5** complete with metal or plastic reservoir (3, 6 and 15 liters) see pages 5-7.

Order No. ¹⁾	Model	Mounting position
ME5	mounted separate from oil reservoir	
MFE5	for flanging to oil reservoir	

¹⁾ Please quote voltage and frequency when ordering.

Notice!

All products from VOGEL may be used only for their intended purpose. If operating instructions are supplied together with the products, the provisions and information therein of specific relevance to the equipment must be observed as well.

In particular, we call your attention to the fact that hazardous materials of any kind, especially the materials classified as hazardous by EC Directive 67/548/EEC, Article 2, Par. 2, may only be filled into VOGEL centralized lubrication systems and components and delivered and/or distributed with the same after consultation with and written approval from VOGEL.

All products manufactured by VOGEL are not approved for use in conjunction with gases, liquefied gases, pressurized gases in solution and fluids with a vapor pressure exceeding normal atmospheric pressure (1013 mbars) by more than 0.5 bar at their maximum permissible temperature.

Multivoltage motors for pump units (assembly M..)

Many export-oriented companies have to deal with voltages/frequencies that deviate from those in Germany. To make it easier for them to buy the most common pump units for centralized lubrication systems we have developed **3 multirange motors that cover a wide range of three-phase voltages and frequencies.**

Pump units with or without oil reservoirs are included, **provided the hydraulic power data listed in the leaflets are not exceeded** (limit values).

They are the following units:

M2, MF2, MFE2, M5, MF5, MFE5, FLM12-3, FLMF12-3, M202

Limit values for

0,2 I-units (M..2-Group):	27 bars – 2000 mm ² /s eff.
0,5 I-units (M..5-Group):	27 bars – 1000 mm ² /s eff.
1,2 I-units FLM12-3:	6 bars – 850 mm ² /s eff.
2x0.2 I-units M202:	12 bars – 850 mm ² /s eff.

Our experience shows they can meet almost every need. That means simplified warehousing for our customers and shorter delivery times, since we always have these 3 types of motors in stock.

Range I



100-130 V / 173-225 V, 50 Hz
120-156 V / 208-270 V, 60 Hz
 order code: **199**
 order code ISO-F: **19E**

Range II



207-254 V / 360-440 V, 50 Hz
249-305 V / 432-528 V, 60 Hz
 order code: **299**
 order code ISO-F: **29E**

Range III



230-290 V / 398-500 V, 50 Hz
290-346 V / 500-600 V, 60 Hz
 order code: **399**
 order code ISO-F: **39E**

A tailor-made motor has to be used instead of a multirange motor in the following cases:

- a) when the desired operating voltage cannot be covered by one of the three voltage ranges,
- b) when the operating voltage, with the voltage tolerances to be expected, exceeds a defined voltage benchmark for the range,
- c) in the case of motors with PTC thermistor sensors,
- d) for the M205 dual-circuit pump unit.

Voltage	Order code
230/400 V, 50 Hz	140
230/400 V, 60 Hz	640
240/415 V, 50 Hz	150
240/415 V, 60 Hz	650
255/440 V, 50 Hz	165
255/440 V, 60 Hz	665
265/460 V, 50 Hz	175
265/460 V, 60 Hz	675
265/460 V, 60 Hz, UL	563
265/460 V, 60 Hz, CSA	676
280/480 V, 60 Hz	680
280/480 V, 60 Hz, UL	562
280/480 V, 60 Hz, CSA	681
280/480 V, 60 Hz, UL/CSA	564
115 V, 50 Hz	257
115 V, 60 Hz	757
230 V, 50 Hz	263
230 V, 60 Hz	763
115 V, 50/60 Hz	429
230 V, 50/60 Hz	428

MFE5 gear pump unit with 3 or 6-liter metal reservoir



Order No.	Flow rate [l/min]	Reservoir capacity [liters]	Reservoir material	Order No. without float switch
MFE5-BW3-2	0.5	3	die-cast aluminum	MFE5-B3-2
MFE5-BW7	0.5	6	sheet steel	MFE5-B7

- 1) Port **P** tapped for solderless tube connection, M14x1.5 for 8 mm diam. tube.
- 2) Connection for cable 7 to 9 mm diameter. See page 3 for further technical details.

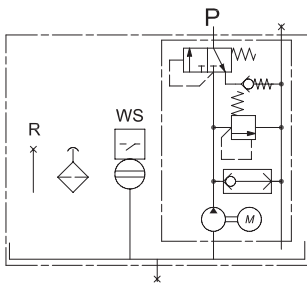
Technical data

Float switch (WS) for monitoring of minimum oil level

Type of contact 1 changeover
 Max. switching voltage 230 V AC / 230 V DC
 Max. switching current 1.0 A
 Max. switching capacity 60 VA / 40 W 3)
 Type of enclosure IP 65
 Temperature range -10 °C to + 80 °C

3) Take appropriate measures to protect contacts when switching inductive loads.

Hydraulic layout for MFE5-BW3-2

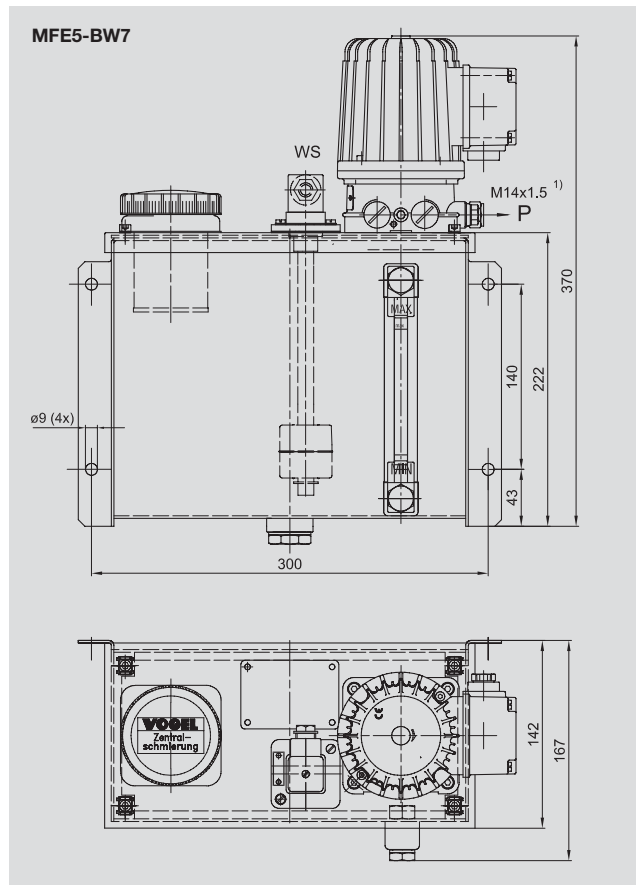
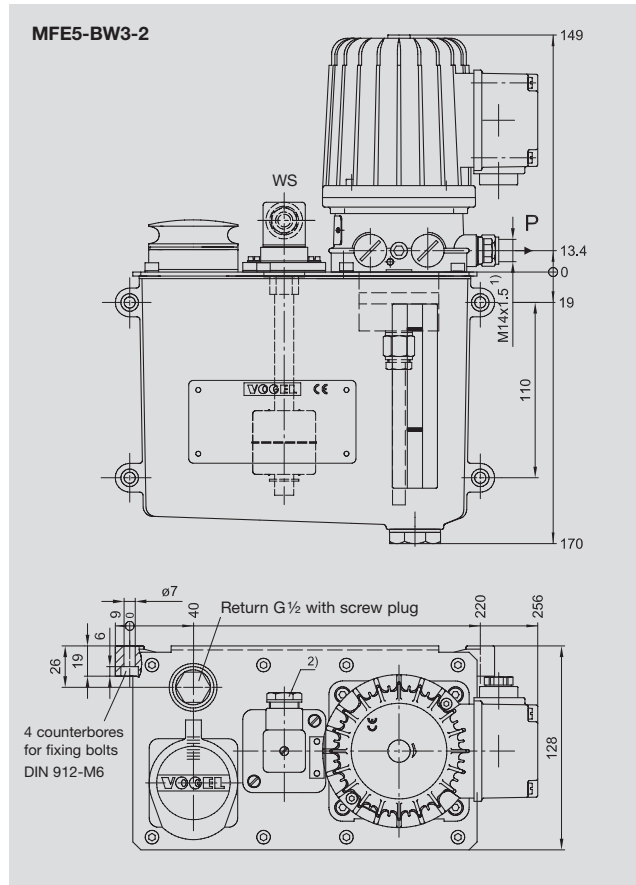
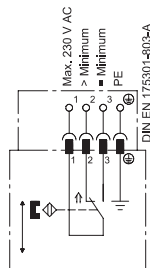


Circuit diagram float switch

Function:
 When the oil drops to a minimum level, contact 1-2 opens and contact 1-3 closes.

With plug-type connector to DIN EN 175301-803

Depicted: full reservoir



MFE5 gear pump unit with 3 or 6-liter plastic reservoir



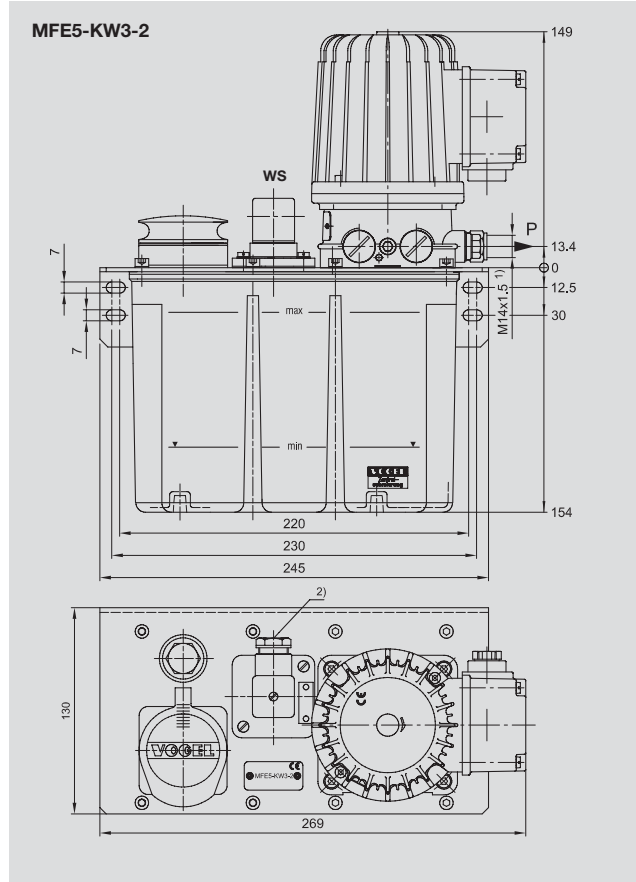
Order No.	Flow rate [l/min]	Reservoir capacity [liters]	Reservoir material	Order No. without float switch
MFE5-KW3-2	0.5	3	plastic	MFE5-K3-2
MFE5-KW6	0.5	6	plastic	MFE5-K6

1) Port **P** tapped for solderless tube connection, M14x1.5 for 8 mm diam. tube.

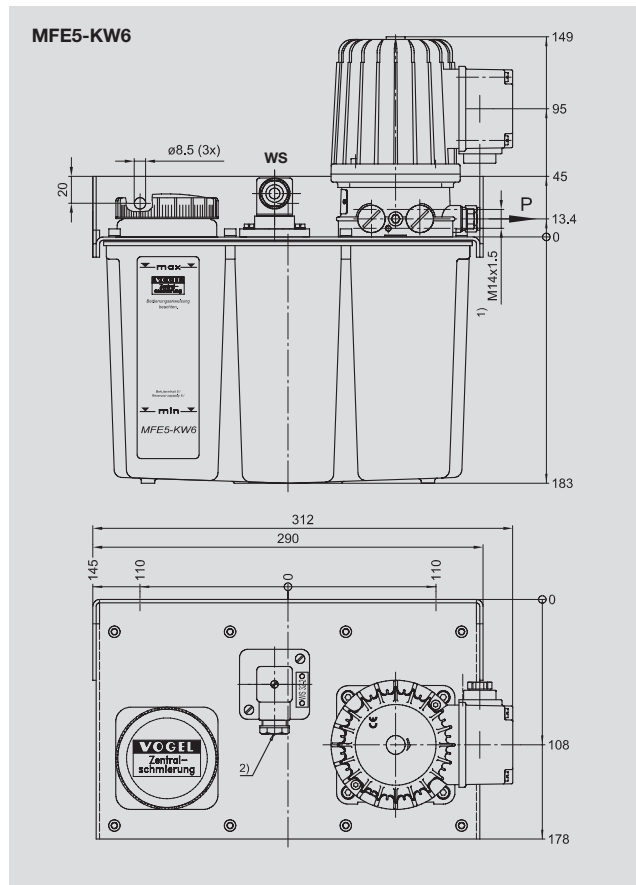
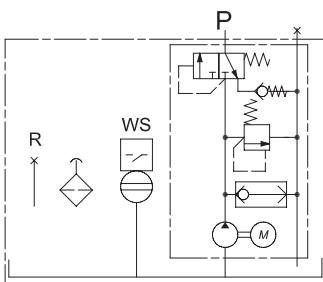
2) Connection for cable 7 to 9 mm diameter

See page 3 for further technical details.

See page 5 for technical data on the float switch.



Hydraulic layout for MFE5-KW3-2



MFE5 gear pump unit with 15-liter sheet steel reservoir



Special design

Order No.	Flow rate [l/min]	Reservoir capacity [liters]
MFE5-BW16	0.5	15

1) Port P tapped for solderless tube connection, M14x1.5 for 8 mm diam. tube.

2) Connection for cable 7 to 9 mm diameter

See page 3 for further technical details.

Technical data

Float switch

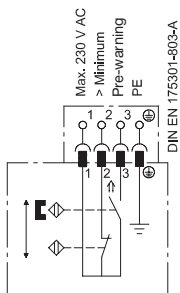
to monitor the critical level of oil with advance warning about 25 mm before the minimum oil level is reached.

- Type of contact 2 NC types (reed contacts)
- Max. switching voltage 230 V AC / 230 V DC
- Max. switching current 0.8 A
- Max. switching capacity 60 VA / 30 W ³⁾
- Type of enclosure IP 65
- Temperature range - 10 °C to + 80 °C

³⁾ Take appropriate measures to protect contacts when switching inductive loads.

Circuit diagram

Float switch

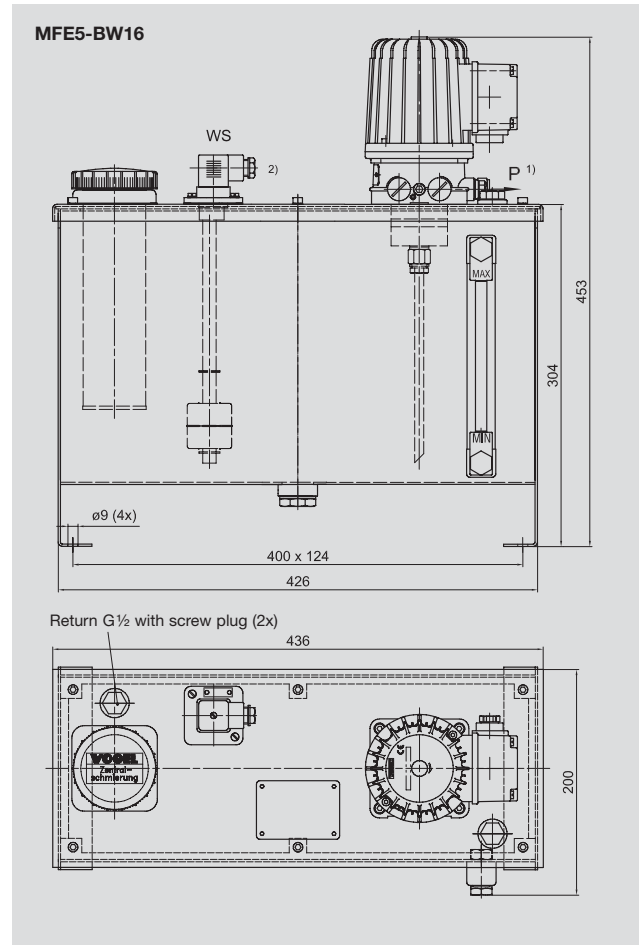


Function:

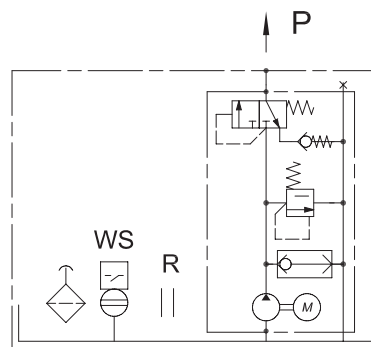
About 25 mm before the minimum oil level is reached contact 1-3 closes. When the minimum oil level is reached contact 1-2 opens in addition.

With plug-type connector to DIN EN 175301-803

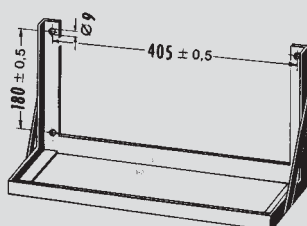
Depicted: full reservoir



Hydraulic layout for MFE5-BW16



Bracket for wall mounting, order No. 249-032.10



Overview table for gear pump units

Order No.	Reservoir capacity [liters]	Reservoir material	Design features
MFE5-KW3-2	3	Plastic	Basic version with WS32-2 float switch contact tube
MFE5-KW3-2-S4	3	Plastic	Basic version with WS35-2 float switch
MFE5-KW3-S9	3	Plastic	For oil as 5 mm ² /s at max. 16 bars
MFE5-KW3-2-S12	3	Plastic	VW version with WS35-S14 float switch (2x NC contacts)
MFE5-KW3-S13	3	Plastic	Unit for 50/95 weatherproofing, float switch WS32-2
MFE5-KW3-S24	3	Plastic	DaimlerChrysler version (Desina); WS35-S30 float switch; Motor with HAN6ES Harting connector
MFE5-BW3	3	Metal	Basic version with WS32-2 float switch contact tube
MFE5-BW3-S14	3	Metal	French Automotiv version (CNOMO); WS35 float switch contact tube; Stäubli filler coupling
MFE5-BW3-S22	3	Metal	For oil as 5 mm ² /s at max. 16 bars
MFE5-BW3-S28	3	Metal	VW-AG version, WS35-S14 float switch (2x NC contacts)
MFE5-BW3-K-S33	3	Metal	Version for operation with capacitors at max. 16 bars
MFE5-BW3-S34	3	Metal	Motor with UL approval
MFE5-BW3-S35	3	Metal	Motor for 50/95 weatherproofing
MFE5-BW3-S37	3	Metal	Basic version with WS35-3 float switch contact tube
MFE5-BW3-S41	3	Metal	DaimlerChrysler version (Desina); WS35-S30 float switch; Motor with HAN6ES Harting connector
MFE5-KW6	6	Plastic	Basic version with WS32-2 float switch
MFE5-KW6-S1	6	Plastic	Basic version with WS35-2 float switch
MFE5-KW6-S8	6	Plastic	FPM version, WS32-S8 float switch
MFE5-KW6-S24	6	Plastic	Version for VW-AG with pressure gauge, protection valve, WS35-S7 float switch (2x NC contacts)
MFE5-KW6-S33	6	Plastic	DaimlerChrysler version (Desina); motor with HAN6ES Harting connector; WS35-S30 float switch with M12x1 plug connector
MFE5-BW7	6	Metal	Basic version with WS32-2 float switch
MFE5-BW7-CF	6	Metal	Basic version with WS35-2 float switch
MFE5-BW7-S8	6	Metal	FPM version, WS32-S8 float switch
MFE5-BW7-S22	6	Metal	Motor with UL approval
MFE5-BW7-S29	6	Metal	French Automotiv version (CNOMO); WS35-2 float switch; Stäubli filler coupling
MFE5-BW7-S54	6	Metal	Motor with enhanced 50/95 weatherproofing
MFE5-BW7-S62	6	Metal	Version for VW-AG with pressure gauge, protection valve, WS35-S7 float switch (2x NC contacts)
MFE5-BW7-S98	6	Metal	Version like MFE5-BW7-S62, but additionally with filler coupling
MFE5-BW7-S107	6	Metal	DaimlerChrysler version (Desina); motor with HAN6ES Harting connector; WS35-S30 float switch with M12x1 plug connector
MFE5-BW7-V57-L	6	Metal	GM - OPEL version with 10 µm pressure filter, WS35-S30 float switch with M12x1 plug connector, EO2 screw unions
MFE5-BW15	15	Metal	Basic version with WS32-2 float switch; wall-mounted reservoir
MFE5-BW16	15	Metal	Basic version with WS32-2 float switch; foot-mounted reservoir
MFE5-BW15-S7	15	Metal	Basic version with WS35-2 float switch; wall-mounted reservoir
MFE5-BW16-S3	15	Metal	For oil as 5 mm ² /s at max. 16 bars; foot-mounted reservoir; FPM version, WS35-S8 float switch
MFE5-BW16-S5	15	Metal	For oil as 5 mm ² /s at max. 16 bars; foot-mounted reservoir
MFE5-BW16-S46	15	Metal	Version for VW-AG; foot-mounted reservoir; with WS35-S7 float switch (2x NC contacts); pressure gauge with protective valve
MFE5-BW16-S93	15	Metal	DaimlerChrysler version (Desina); foot-mounted reservoir; motor with HAN6ES Harting connector; WS35-S30 float switch with M12x1 plug connector
MFE5-BW16-V57L	15	Metal	GM / OPEL version; foot-mounted reservoir; 10 µm pressure filter; WS35-S30 float switch with M12x1 plug connector, EO2 screw unions



A brand of the SKF Group

Willy Vogel AG

Motzener Strasse 35/37
12277 Berlin, Germany
P.O.Box 970444 · 12704 Berlin

Tel. +49 (0) 30 72002-0
Fax +49 (0) 30 72002-111
info@vogel-berlin.de
www.vogelag.com

Willy Vogel AG

2. Industriestrasse 4
68766 Hockenheim
Germany

Tel. +49 (0) 6205 27-0
Fax +49 (0) 6205 27-132
info@vogel-berlin.de
www.vogelag.com

Vogel France SAS

Rue Robert Amy, B.P. 70130
49404 Saumur cedex
France

Tel. +33 (0) 241 404 200
Fax +33 (0) 241 404 242
info@vogelfrance.com
www.vogelfrance.com